

NOTES

1. REFER TO DETAIL SHEETS FOR GRADE AND CHAINAGE

LEGEND

- Ø 100mm GRAVITY DRAIN
- MANHOLE
- INSPECTION POINT
- PROPERTY CONNECTION



REV.	DATE	DESCRIPTION	DRAFT	ENG.	APPD.
A	13.07.06	ISSUED TO COUNCIL	VR LHB		NJS



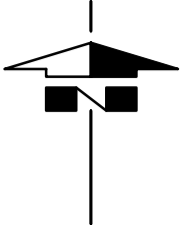
WALLBRIDGE & GILBERT
Consulting Engineers
60 Wyatt Street Adelaide South Australia 5000
Telephone (08) 8223 7433 Facsimile (08) 8232 0967
Email adelaide@wgeng.com
W&G Engineers Pty Ltd ACN 052 528 926
trading as Wallbridge & Gilbert

PARNDANA STEDS
OVERALL LAYOUT PLAN

A1

DRAWING NUMBER
Job Number Sheet No. Rev.
C060235 ST01A

Information used in this application was derived from digital databases sourced by Kangaroo Island Council. Therefore, Kangaroo Island Council cannot accept any responsibility for any errors, omissions, or positional accuracy displayed on these maps.

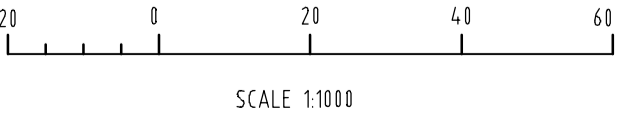


LEGEND	
	Ø100mm GRAVITY DRAIN
	MANHOLE
	INSPECTION POINT
	PROPERTY CONNECTION
0.66%	GRADE
IL 35.50	INVERT LEVEL IN METRES

NOTES

1. PIPE GRADES, LEVELS AND LOCATIONS HAVE BEEN TRANSFERRED DIRECTLY FROM THE DEPARTMENT OF PUBLIC HEATH DRAWINGS APRIL 1969. ALL LEVELS ON THESE DRAWINGS WERE IN IMPERIAL MEASUREMENTS. ALL LEVELS WERE IN A LOCAL COORDINATE BASE.
2. THESE PLANS ARE A COLLECTION OF COUNCIL'S RECORDS AND NO ON SITE VERIFICATION HAS BEEN UNDERTAKEN.
3. AERIAL PHOTO BASE IS INDICATIVE ONLY AND HAS NOT BEEN DIGITALLY ADJUSTED.

Information used in this application was derived from digital databases sourced by Kangaroo Island Council. Therefore, Kangaroo Island Council cannot accept any responsibility for any errors, omissions, or positional accuracy displayed on these maps.



REV.	DATE	DESCRIPTION	DRAFT	ENG.	APPD.
A	13.07.06	ISSUED TO COUNCIL	VR LHB		NJS

W&G
WALLBRIDGE & GILBERT
Consulting Engineers

60 Wyatt Street Adelaide South Australia 5000
Telephone (08) 8223 7433 Facsimile (08) 8232 0967
Email adelaide@wgeng.com

W&G Engineers Pty Ltd ACN 052 528 926
trading as Wallbridge & Gilbert

PARNDANA STEDS
STEDS DRAIN LAYOUT PLAN
SHEET 1

A1

Drawing
VR

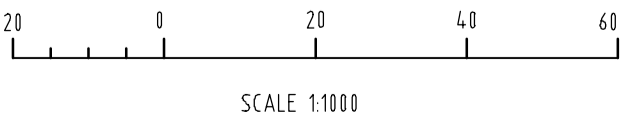
DRAWING NUMBER
Job Number Sheet No. Rev.
C060235 ST02A



LEGEND	
	Ø100mm GRAVITY DRAIN
	MANHOLE
	INSPECTION POINT
	PROPERTY CONNECTION
0.66%	GRADE
IL 35.50	INVERT LEVEL IN METRES

NOTES

1. PIPE GRADES, LEVELS AND LOCATIONS HAVE BEEN TRANSFERRED DIRECTLY FROM THE DEPARTMENT OF PUBLIC HEATH DRAWINGS APRIL 1969. ALL LEVELS ON THESE DRAWINGS WERE IN IMPERIAL MEASUREMENTS. ALL LEVELS WERE IN A LOCAL COORDINATE BASE.
2. THESE PLANS ARE A COLLECTION OF COUNCIL'S RECORDS AND NO ON SITE VERIFICATION HAS BEEN UNDERTAKEN.
3. AERIAL PHOTO BASE IS INDICATIVE ONLY AND HAS NOT BEEN DIGITALLY ADJUSTED.



Information used in this application was derived from digital databases sourced by Kangaroo Island Council. Therefore, Kangaroo Island Council cannot accept any responsibility for any errors, omissions, or positional accuracy displayed on these maps.

REV.	DATE	DESCRIPTION	DRAFT	ENG.	APPD.
A	13.07.06	ISSUED TO COUNCIL	VR LHB		NJS

W&G
WALLBRIDGE & GILBERT
Consulting Engineers

60 Wyatt Street Adelaide South Australia 5000
Telephone (08) 8223 7433 Facsimile (08) 8232 0967
Email adelaide@wgeng.com

W&G Engineers Pty Ltd ACN 052 528 926
trading as Wallbridge & Gilbert

PARNDANA STEDS

STEDS DRAIN LAYOUT PLAN
SHEET 2

A1

DRAWING NUMBER

Job NumberSheet No. Rev.

C060235ST03A

Drawn

VR

PUMP STATION	
CHAMBER SIZE	Ø1.8m
TOP OF TANK	148.000
HIGH LEVEL ALARM	147.000
INLET PIPE INVERT	142.890
PUMP ON/OFF LEVELS	PRESSURE ACTIVATED SWITCH
BASE RL	142.700
PUMP DUTY	6.0 L/s @ 13.8m HEAD

LEGEND	
	Ø150 mm GRAVITY DRAIN
	Ø100 mm RISING MAIN
	FLUSHING POINT
	PUMP STATION
	EXISTING GRAVITY DRAIN
	CURVE RADIUS (m)

- NOTES
1. REFER TO LOCAL GOVERNMENT ASSOCIATION STANDARD DRAWINGS FOR:
FLUSHING POINT DETAILS
FLUSHING POINT & HOUSE CONNECTION DETAILS
THRUST BLOCK DETAILS
PUMP OR VALVE CHAMBER ACCESS COVER
SUBMERSIBLE PUMPING STATION DETAILS
SUBMERSIBLE PUMPING STATION DETAILS
VENT DETAILS
PUMP STATION ELECTRICAL DETAILS
OVERFLOW SPILLWAY
LAGOON FENCE
MARKER POST & WARNING SIGN DETAILS
FACULTATIVE POND DIVERSION FENCE
AIR VALVE AND SCOUR VALVE DETAILS

SD - 1 REV A
SD - 3 REV A
SD - 7 REV A
SD - 8 REV B
SD - 9 REV B
SD - 10 REV B
SD - 12 REV A
SD - 13 REV A
SD - 16 REV A
SD - 17 REV C
SD - 18 REV A
SD - 19 REV A
SD - 20 REV A

2. ALL DRAWINGS ARE TO BE READ IN CONJUNCTION WITH THE SPECIFICATION.

3. ALL EXISTING SERVICES ARE TO BE LOCATED BY THE CONTRACTOR PRIOR TO COMMENCEMENT OF WORK.

4. EXACT ALIGNMENT OF PROPOSED GRAVITY DRAIN AND RISING MAIN TO BE DETERMINED ON SITE FOLLOWING LOCATION OF EXISTING SERVICES AND GRAVITY DRAINS.

5. CONTRACTOR TO CONFIRM INVERTS OF ALL EXISTING PIPES AND SUMPS PRIOR TO CONNECTING AND LAYING OF ALL NEW PIPEWORK.

6. GRAVITY DRAIN TO BE UPVC SEWER CLASS PIPE.

7. MINIMUM RISING MAIN PIPE COVER TO BE 750mm.

8. AIR VALVES AND SCOUR VALVES TO BE INSTALLED AT ALL HIGH AND LOW POINTS ALONG RISING MAIN.

9. CONTRACTOR TO REMOVE ALL EXISTING VEGETATION WITHIN EXTENTS OF CHAINMESH PERIMETER FENCE SUBJECT TO SUPERINTENDENT'S APPROVAL.

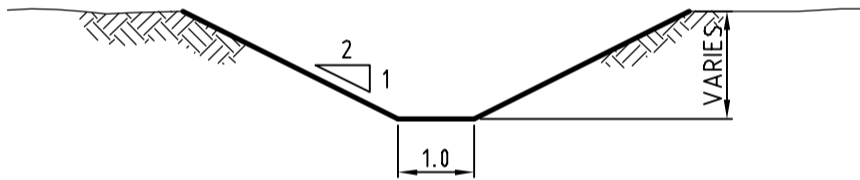
10. ALL EARTHWORK BATTERS TO BE 1 ON 3 UNLESS SHOWN OTHERWISE.

11. STORAGE AND FACULTATIVE LAGOONS TO BE LINED WITH 1.5mm THICK HDPE LINER.

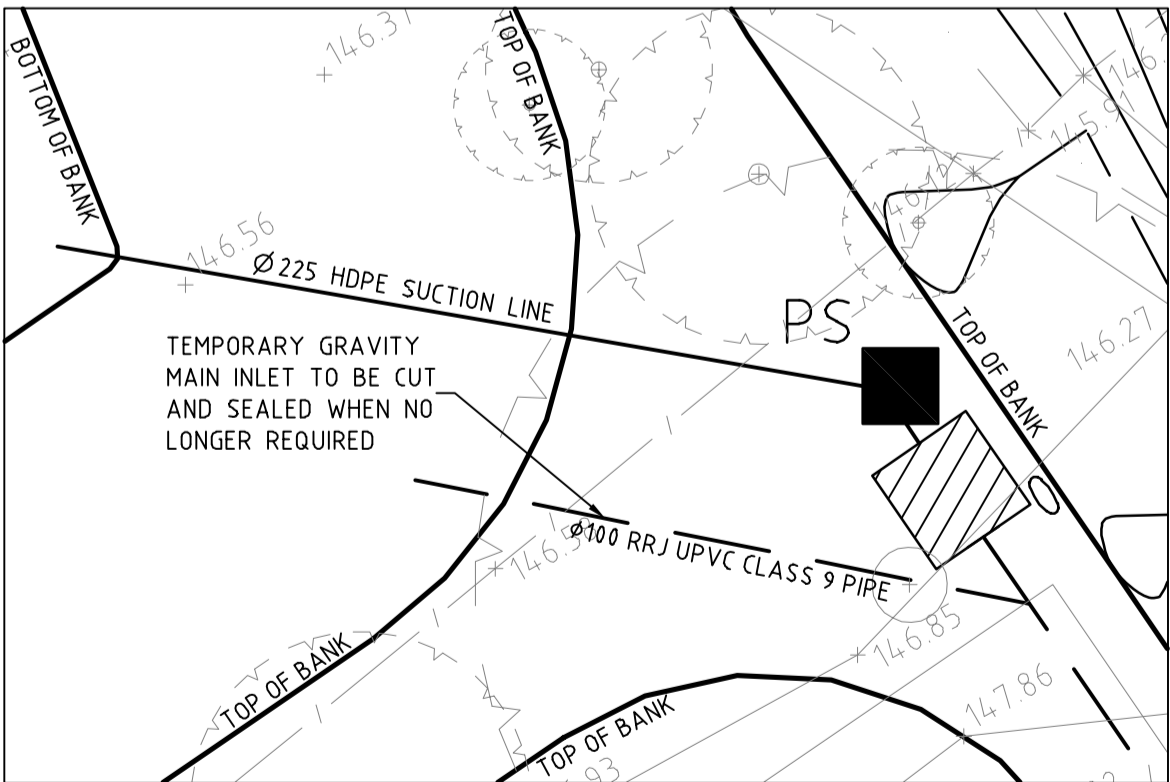
12. BOOT GRAVITY LINES THROUGH LINER.

13. REFER TO SHEET C03 FOR DETAILS.

14. REFER TO SHEET C04 FOR LAGOON AND GRAVITY MAIN SETOUT DETAILS.

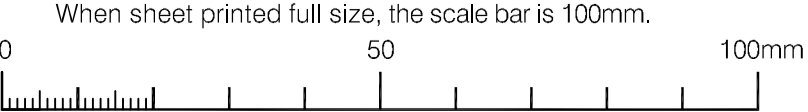


CREEK DIVERSION
SCALE 1:100

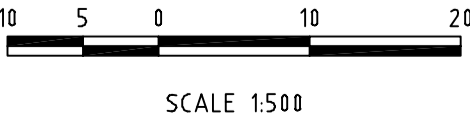


ENLARGEMENT
SCALE 1:200

I:\2006\02\402009\060235 - Parndana SW & STEPS\060235-C01.dwg B: 22/12/2008 10:50 AM J.Barker



Information used in this application was derived from digital databases sourced by Kangaroo Island Council. Therefore, Kangaroo Island Council cannot accept any responsibility for any errors, omissions, or positional accuracy displayed on these maps.



PRELIMINARY ISSUE
NOT FOR CONSTRUCTION

REV.	DATE	DESCRIPTION	DRAFT	ENG.	CHKD
A	18.11.08	PRELIMINARY ISSUE	LHB	NJS	NJS
B	22.12.08	APPROVAL ISSUE	LHB	NJS	NJS

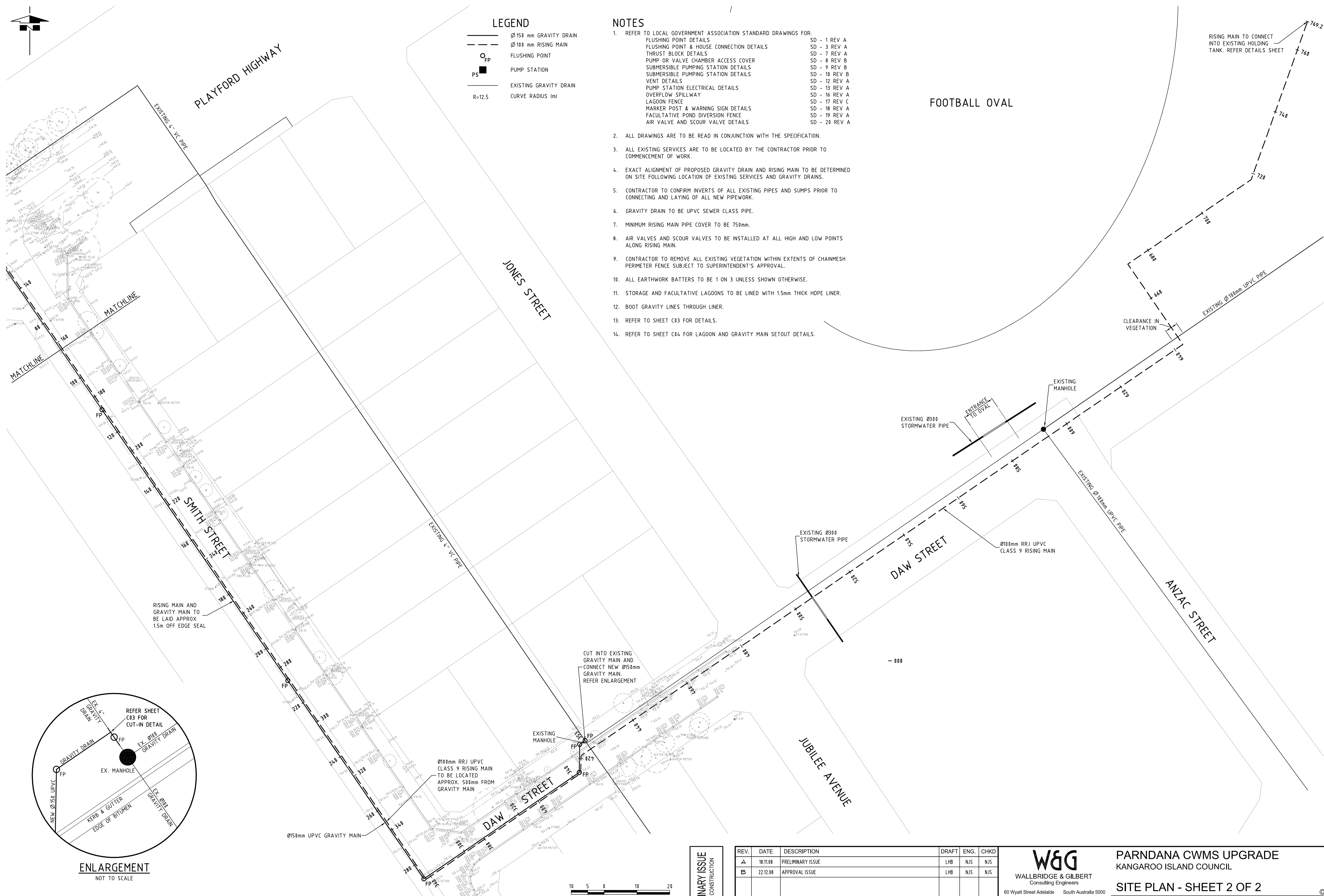
W&G
WALLBRIDGE & GILBERT
Consulting Engineers
60 Wyatt Street Adelaide South Australia 5000
Telephone (08) 8223 7433 Facsimile (08) 8232 0967
Email adel@del@wgeng.com
W&G Engineers Pty Ltd ACN 052 528 926
trading as Wallbridge & Gilbert

PARNDANA CWMS UPGRADE
KANGAROO ISLAND COUNCIL


SITE PLAN - SHEET 1 OF 2

A1

DRAWING NUMBER
Job Number Sheet No. Rev.
C060235 C01 B



REV.	DATE	DESCRIPTION	DRAFT	ENG.	CHKD
A	18.11.08	PRELIMINARY ISSUE	LHB	NJS	NJS
B	22.12.08	APPROVAL ISSUE	LHB	NJS	NJS

 WALLBRIDGE & GILBERT Consulting Engineers 90 Wyatt Street Adelaide South Australia 5000 Telephone (08) 8223 7433 Facsimile (08) 8232 0967 Email adelaide@wsgeng.com	PARNDANA CWMS UPGRADE KANGAROO ISLAND COUNCIL SITE PLAN - SHEET 2 OF 2
--	---