



swanbury penglase
architects of human space

Kangaroo Island Town Centres Project

Stage 2 – Walking Trails, Streetscapes and Style Guide



Draft Concept Plans –
American River Walking Trail
May 2010

Project Aim



The purpose of this component of the project is to prepare a concept design for the development of a recreational trail along the coastline of American River which provides access to major attractions and the township key parts of the township along the way.

Key Tasks



Stage 1: Project Initiation and Preliminary Opportunities (KI Trip No 1)

Site Analysis – ‘Site Immersion’

Understanding of Issues and Constraints

Stage 2: Initial Concepts

Preliminary Concept Plans and Sections

Preliminary Artwork Concepts

Stage 3: Wider Community and Stakeholder Consultation (KI Trip No 2)

Draft Concept Displays (3 week consultation period)

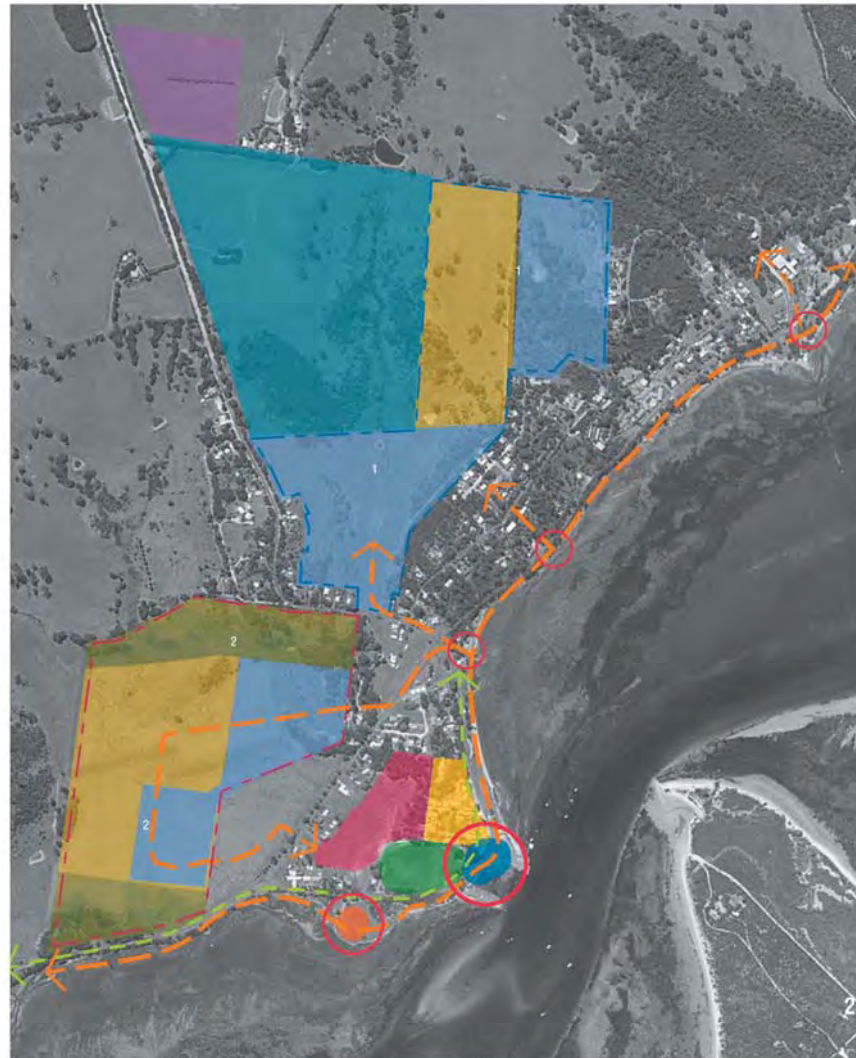
Public Forums (2 no.)

Stage 4: Final Plans (KI Trip No 3)

Final Design Plans including feedback

Presentation to TCC

Study Area



Community and Steering Committee Issues and Opportunities



Walking and cycling trail along foreshore to connect with shop and cannery as well as south to the existing environmental trail.

Incorporate street furniture to give a Maritime feel

Landscape upgrade required for whole of wharf area - important tourist precinct

Café on wharf would add to tourism benefits – better promotion/ integration with oyster farm

Signage/ guides for tourist drive / walking opportunities/ art that interpret the areas distinct birdlife

Interpretive signage is important but must be visible by people driving

Future swimming area linked into the trail

Historic focal point just south of fire station – pioneer farming

Objectives



Develop a continuous shared trail from The Cannery to Remembrance Reserve

Create opportunities for sightseeing

Strengthen connections to and around the town centre

Provide signage and wayfinding along the trail that interprets the towns unique history and significant birdlife

Incorporate Public Art in strategic locations to enhance the character and public experience of the trail.

Create identifiable nodes along the trail that are attractive to visitors and encourage more tourism in the town

Trail Concept Proposal

American River Recreational Trail Concept Design Overview

The proposed walking trail for American River will provide a valuable link to the towns primary tourism and recreational asset, the coastline. Building on the nature based character established already by the American River Aquatic Reserve Independence Trail, there is a great opportunity to create a more substantial recreational trail along the coastline from Remembrance Reserve through the tourism hub of the wharf precinct and northwards past the town centre (Post Office) to the valuable heritage site of the Cannery in the north. The trail will provide a continuous and safe pedestrian and bicycle connection along the length of this unique fishing village.

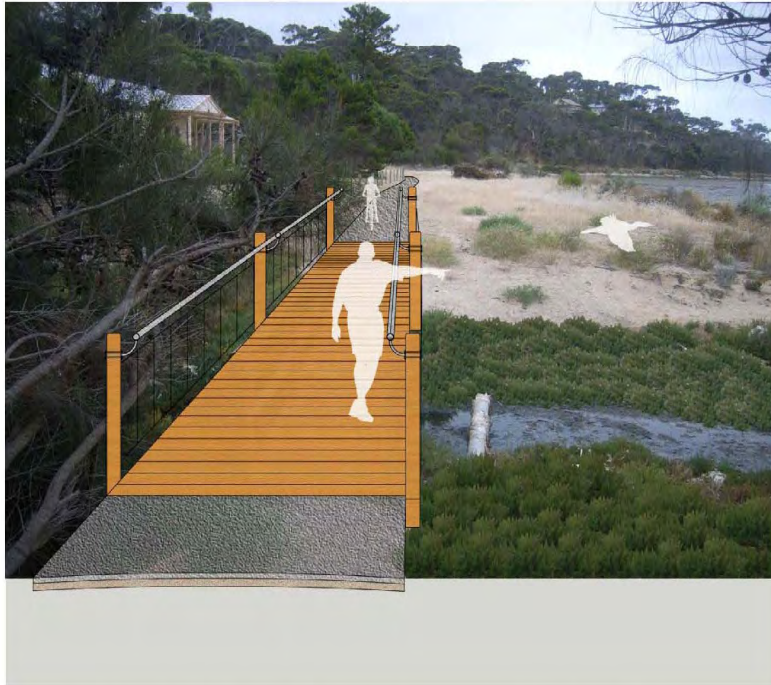
Key design elements of the trail include:

- A minimum 2.5 metre wide path that will accommodate shared pedestrian and bicycle access;
- Asphalt surface treatment with some sections of compacted granitic sand on the outskirts of the town (in lower use areas);
- Protective balustrade will be provided in areas where paths are located on steep slopes;
- Seats and other amenities will be incorporated along the trail;
- Linkages will be provided to key recreational assets such as the existing foreshore playground, potential future beach area adjacent to the wharf and picnic / camping areas to the north of the village;
- Public art will be incorporated in key strategic locations that will interpret the town's natural and cultural history. Refer to the public art concept sheet for further information;
- A combination of interpretive and way finding signage will be provided to enhance the attraction of the trail to tourists. In particular, signage should be provided at the entry point into the township (at Remembrance Reserve) that attracts tourists into the township;
- Potential catalysts and drivers for the development of the trail include:
 - better branding of the oyster farming operation to promote the 'farmers door' tourism experience;
 - improving connections from the wharf precinct into the town centre (General Store);
 - improving access and signage to the important heritage assets of the Cannery and fishing village history which is currently under utilised;
 - opportunity to interpret the important migratory sea birds that inhabit the area

Funding for the trail will be sought from state and federal government funding bodies such as Planning SA's ROSES scheme, office of recreation and sport and federal tourism funding bodies. There is also the potential to secure funding from local commercial enterprises.



Trail Concept Proposal



EXISTING VEGETATION / NEW TIMBER BRIDGE WITH RECYCLED PLASTIC COMPOSITE DECKING ADJOINING NEW 2.5M WIDE BITUMEN SHARED USE PEDESTRIAN/ BIKE PATH / RIPARIAN REVEGETATION

SECTION/ PERSPECTIVE EE

NOT TO SCALE

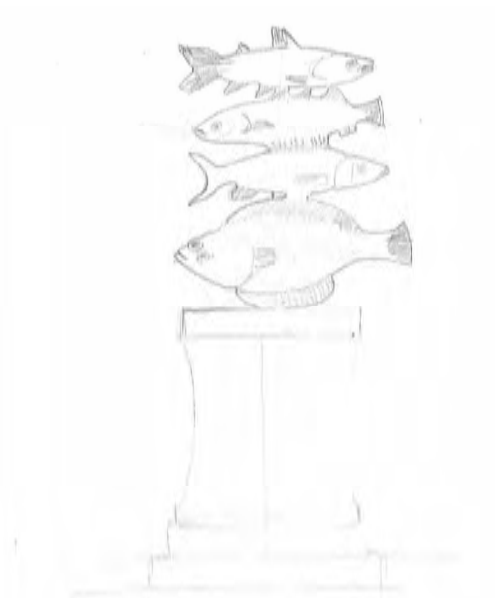


REVEGETATION / WIDEN EXISTING PATH TO 2.5M BITUMEN SHARED USE PEDESTRIAN/ BIKE PATH / REVEGETATION

SECTION/ PERSPECTIVE FF

NOT TO SCALE

Trail Concept Proposal



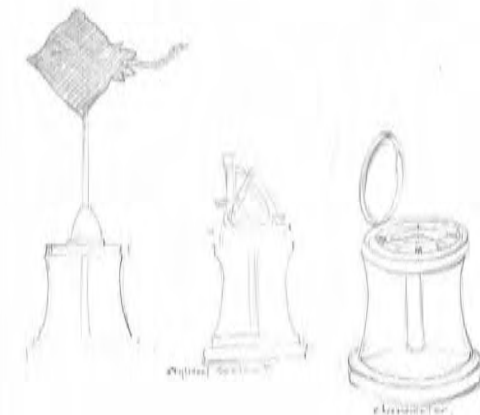
TOTEMS PRECEDENT IMAGERY

K.I. Walking Trails Art Strategy

A series of 'totems' will be developed as part of a strategy to align and identify the four walking trails on the island. The base of the totems for all trails would take the same form possibly based on mast poles or other similar nautical pole structures. The bases would act as platforms or stands for artworks which related to the particular walking trail. The structures would identify those areas as walking trails. The particular regions might be identified by one motif or icon or be a number of sculptures that relate to the particular walk.

This offers an opportunity for a number of artists to develop small-scale works in a variety of mediums. The uniform nature of the pole/totem will act as a signifier for the trails.

As the trails overlap with the street scaping of Penneshaw and Parndana the totems would be integrated.



Trail Concept Proposal



Pavement Treatment

- ***Path Width***
- ***Path Materials***
- ***Path Alignment***
- ***Additional Design Considerations***



Trail Concept Proposal



Additional Design Considerations

Signage

Lighting

Ancillary Facilities

- Seating
- Shelters
- Bicycle Racks
- Rubbish Bins

Signage Strategy and Facilities Plan



Indicative Costs



Walking Trail

\$ 750,000 (excl Contingency and GST)

Project Risks



Cost contingency

- design, construction

Outcomes of detailed site investigations

Land Access & Tenure

- Government agency control
- Local residents and adjacent landowners
- Business leases

Project Risks



Public Safety

- Undeveloped paths
- Rough and loose surfaces
- Erosion
- Narrow sections
- Conflict with traffic (motorised and non-motorised)
- Security
- Limited or no directional signage
- Steepness of path grades
- Unprotected path edges (leading to steep drop offs)
- Conflicts with maintenance/ service/ emergency vehicle access

Implementation Strategy

- Subject to detailed review by Council

Funding Potential

Internal sources

External sources

- Federal Govt.
- State Govt.
- Private Sector
- Other

Marketing Opportunities



Optimum stage to market is when the trail and/or streetscape is fully developed

Brand/theme for the trail

Add value to local industry

Provide a marketing approach to increase use and promotion

Next Steps



Late May 2010

Community consultation completed

Early June 2010

Review and agree changes to plans

Late June 2010

Make changes and submit final plan (including contract documentation)