

137°46'22.9"E,
35°47'12.0"S

MARCH 2024

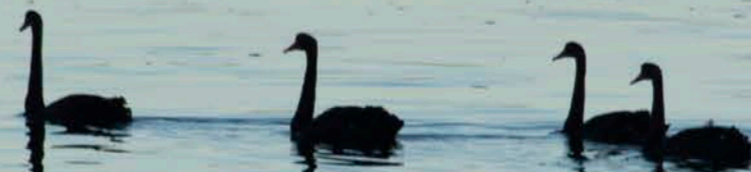
Tangara Drive Foreshore Improvements | Community Information Session



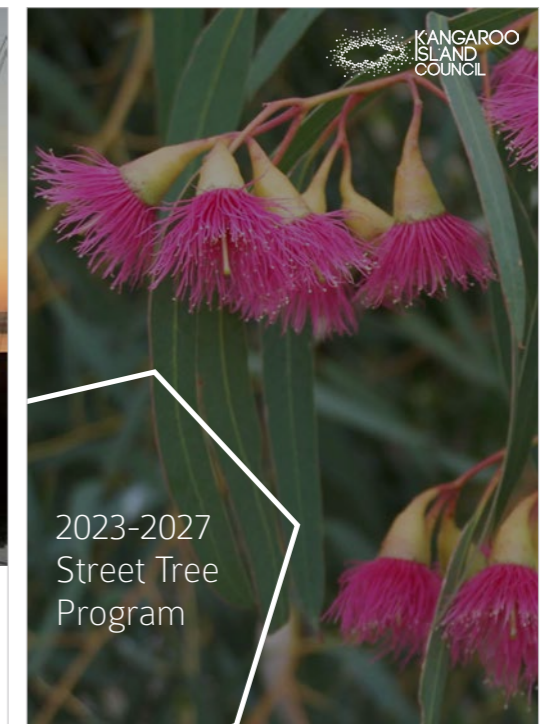
Where the
bush meets
the bay

American River Vision

American River is a small town that **welcomes residents and visitors alike** to share its social and environmental assets, providing a **unique and tranquil escape** for either a moment or a lifetime.



Recent and Upcoming Projects



- Town Centres Project (Wharf Precinct)
- SA Water reticulated water connection
- Three Towns Walk signage
- American River self service fuel station

KEY ISSUES TO ADDRESS WITHIN TANGARA DRIVE PRECINCT:

- Unclear vehicle parking + access
- Disconnected from other areas (e.g. General Store)
- Lack of clear and safe pedestrian movement
- Risk of coastal inundation and drainage challenges
- No existing footpath between town centre, campground and public toilets, and The Shed
- Weeds growing in unpaved areas
- Unsealed parking areas
- Road condition from SA water mains work














Proposed Master Plan - Fully Funded (Grant + Council)



-  1.5m concrete footpath
-  1.2-1.5m clay paved footpath (ash to match existing)
-  Compacted limestone walking trail

Proposed Master Plan - Partially Funded (Council Only)

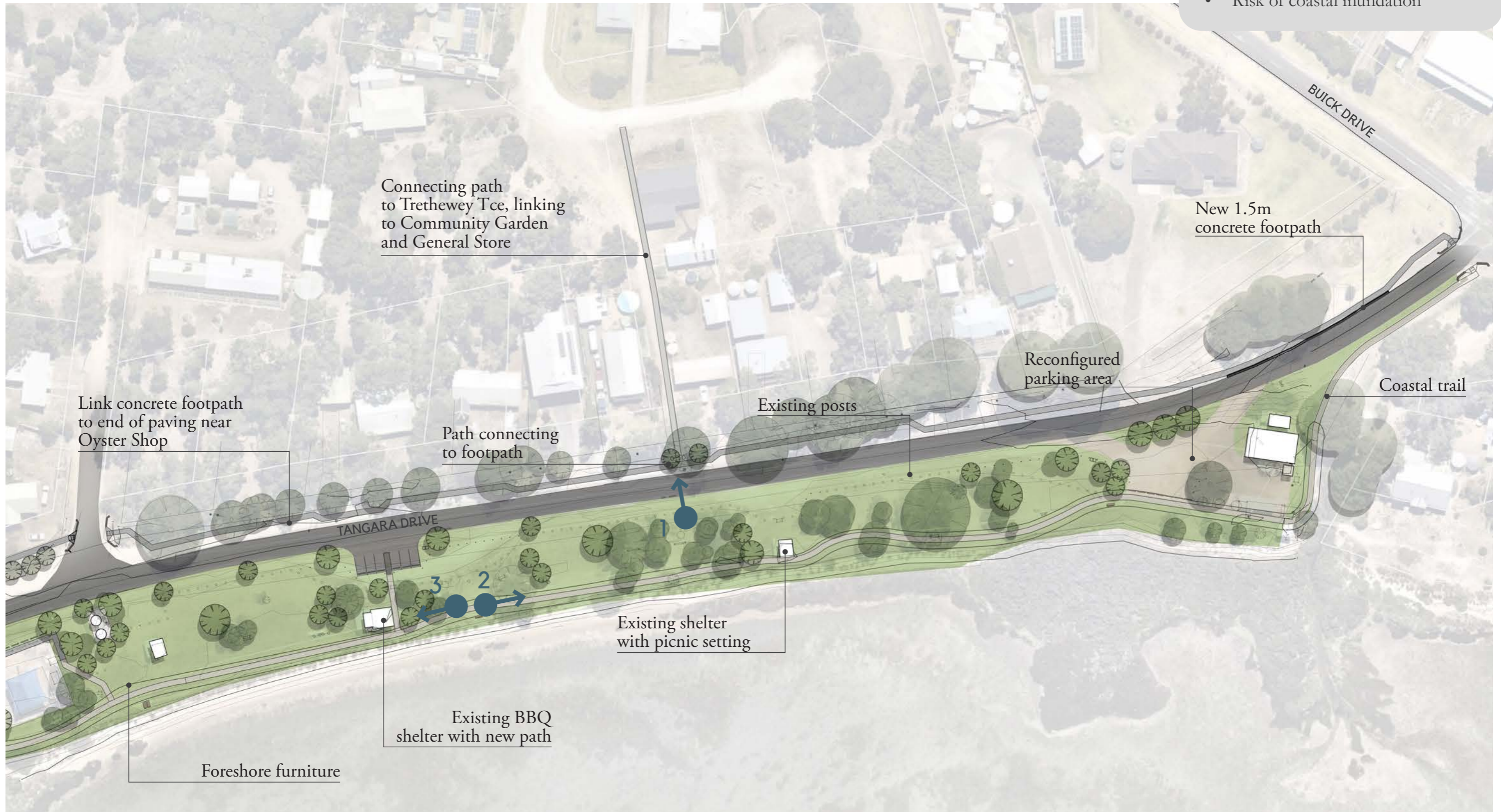


- 1.5m concrete footpath
- 1.2-1.5m clay paved footpath (ash to match existing)

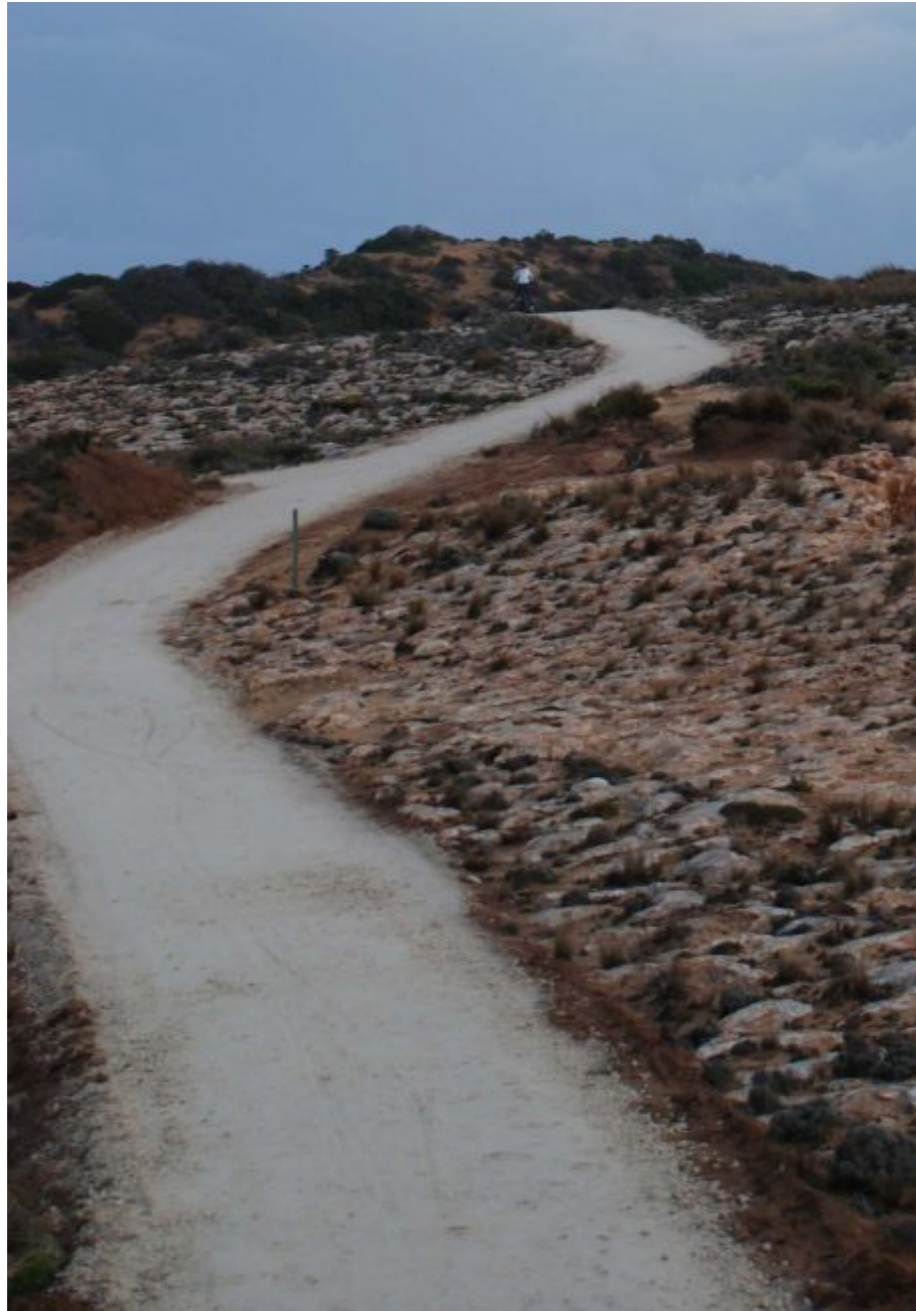
Section 1: Playground - CFS/Buick-Scenic Dr

KEY ISSUES

- Unsafe vehicle parking + access
- Disconnected from other areas
- Unsealed parking areas
- Lack of clear and safe pedestrian movement
- Risk of coastal inundation



●➔ Location of perspective (artistic impression)



Crushed limestone trail - Robe SA



Passive drainage - swales with drainage, flush footpath and road



Increased coastal plantings to improve water quality and reduce erosion

Raised coastal trail providing amenity and protection from occasional coastal inundation

Trail linking existing BBQ shelter with coastal trail and parking to improve usability

Allocasuarina verticillata and other key indigenous species to support endangered fauna species



Trail linking foreshore
to American River Post
Office & General Store

Future fence
along easement

New concrete
footpath on
western side of
Tangara Drive

Allocasuarina verticillata and other key indigenous species to support endangered fauna species



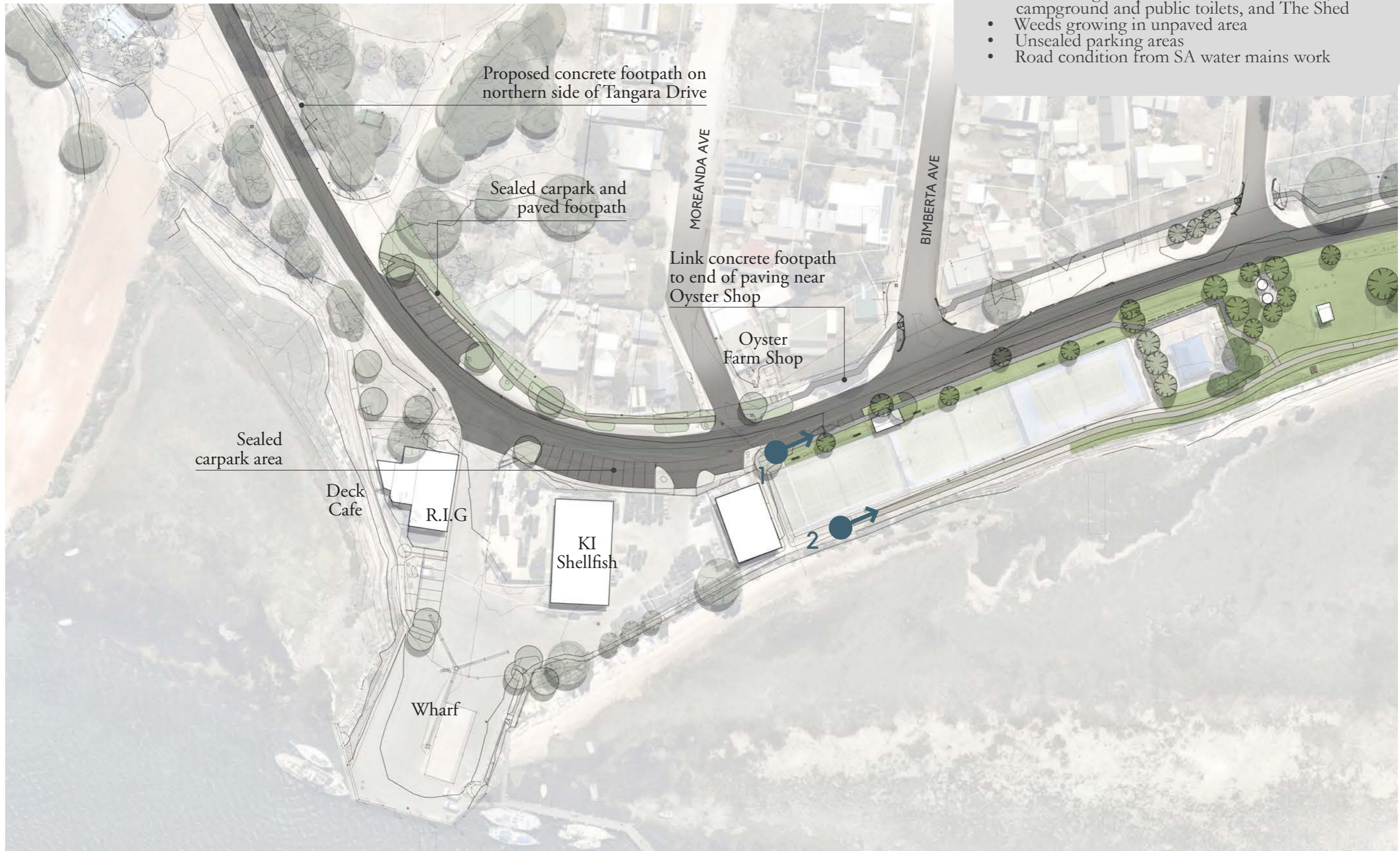
Raised coastal trail providing amenity and protection from occasional coastal inundation


Increased coastal plantings to improve water quality and reduce erosion

Section 2: Wharf precinct - Playground

KEY ISSUES

- No existing footpath between town centre, campground and public toilets, and The Shed
- Weeds growing in unpaved area
- Unsealed parking areas
- Road condition from SA water mains work



 Location of perspective (artistic impression)



1.5m concrete footpath

Sealed parallel parking area with posts to match existing and delineate vehicular areas

Parallel parking sign

Street trees with minimal leaf litter and root barrier

Replaced simple bench seating

Connected clay paving to existing path from Town Centres Project

Public tennis courts



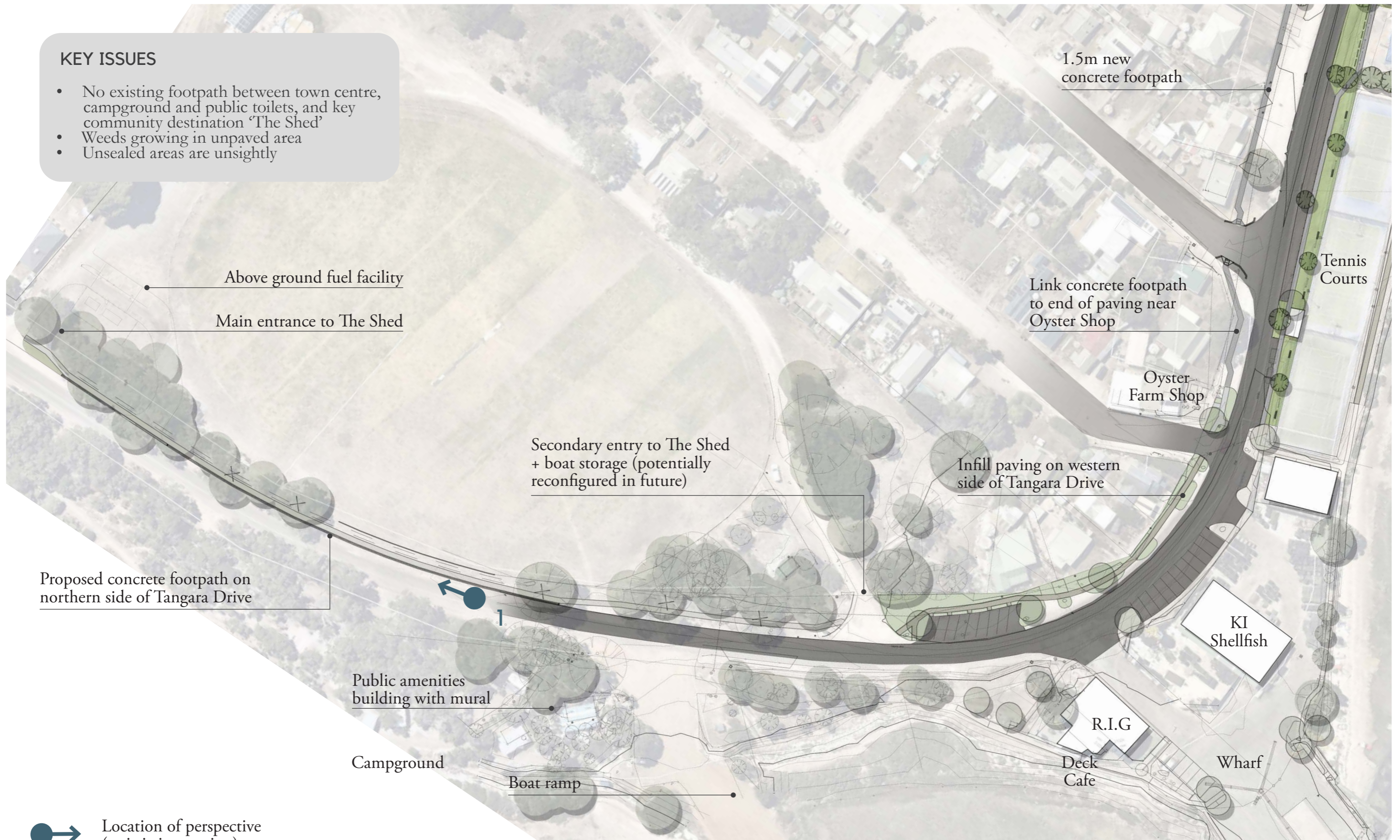
Coastal trail to connect to clay paved footpath

Coastal plantings to improve water quality, amenity and reduce erosion

Section 3: Southern End - Shed Entry to Wharf precinct

KEY ISSUES

- No existing footpath between town centre, campground and public toilets, and key community destination 'The Shed'
- Weeds growing in unpaved area
- Unsealed areas are unsightly



●➔ Location of perspective (artistic impression)



Self-service fuel
station location

1.5m concrete footpath

Concrete wheel stops
spaced at even intervals



KANGAROO
ISLAND
COUNCIL